

INTRODUCTION TO CROP INSURANCE

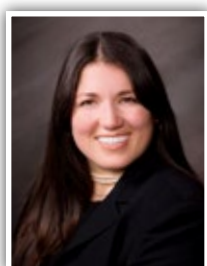
Join us for an informational presentation on the coverages available to farmers through the federal crop insurance program.



hosted by George Petersen Insurance Agency & NAU Country
in Partnership with the following Farm Bureaus; Colusa County, Sonoma County, & Mendocino County



Matt Barr



Elisabeth Quick

Hear from NAU Country's Western Branch Claims Manager, Matt Barr about information on recent claims in the area. Learn about covered perils and the claims adjustment process.

Elisabeth Quick, Producer at George Petersen Insurance Agency will give an overview of how coverage election options intersect with the USDA/FSA subsidy.

Find a location near you, and register today...

Colusa County Farm Bureau

Tuesday, November 15th
10am to 12pm

Rocco's Banquet Hall
538 Main Street, Colusa, Ca

Mendocino County Farm Bureau

Tuesday, January 10th
9am to 11am

Mendocino County Farm Bureau - Board Room
303-C Talmage Road, Ukiah, Ca

Sonoma County Farm Bureau

Wednesday, January 11th
10am to 12pm

George Petersen Insurance - Santa Rosa
175 W. College Ave, Santa Rosa, Ca

[Click here to Register Today](#)